



MARINER'S POINTE

- APARTMENT HOMES -

Mariner's Pointe offers newly-renovated one, two, and three-bedroom apartments and townhomes for you to call home! For your comfort, every home offers spacious living areas, fully-equipped kitchens, generous storage space, and a private patio or balcony!

Mariner's Pointe Apartments offers many amenities to make sure you enjoy your time here with us! Spend time with your family at our children's playground, which is nestled among the many trees on our property, or relax outdoors at our picnic area! For your convenience, we also offer an on-site laundry facility, off-street parking, and on-site management and maintenance. We look forward to seeing you at Mariner's Pointe Apartments!

APARTMENT FEATURES

- 1 & 2 Bedroom Apartment Homes
- 2 & 3 Bedroom Townhomes Available
- Renovated Kitchens Available
- Stainless Steel Appliances*
- Renovated Bathrooms
- Washer/Dryer in Select Apartments
- Private Patio or Balcony
- Short Term Leases Available
- Air Conditioning Available in Select Units
- High Speed Internet
- Cable Ready
- Carpet

COMMUNITY AMENITIES

- Pet Friendly
- Dog Park **AIONWAG** Coming Soon
- Playground **AIONPLAY** Coming Soon
- Only 28 Minutes to Baltimore's Inner Harbor
- 5 minutes to Mariner Point Park for boating, hiking, cycling trails, fishing, playground & picnic area w/grills
- 3.5 miles to White Marsh Town Center and The Avenue at White Marsh
- Easy access to State Highway 40 and I-95
- 24-Hour Emergency Maintenance
- Online Maintenance Requests
- Online Rent Payment & Resident Portal
- Onsite Management Office



EVERYTHING YOU WANT
EXACTLY WHAT
YOU DESERVE.



311 Trimble Rd, Joppatowne, MD 21085
marinerspointe@aionmanagement.com | livemarinerspointe.com

410-679-2104

AION
MANAGEMENT



MARINER'S POINTE

-APARTMENT HOMES-



311 Trimble Rd, Joppatowne, MD 21085
marinerspointe@aionmanagement.com | livemarinerspointe.com

410-679-2104

AION
MANAGEMENT



MARINER'S POINTE

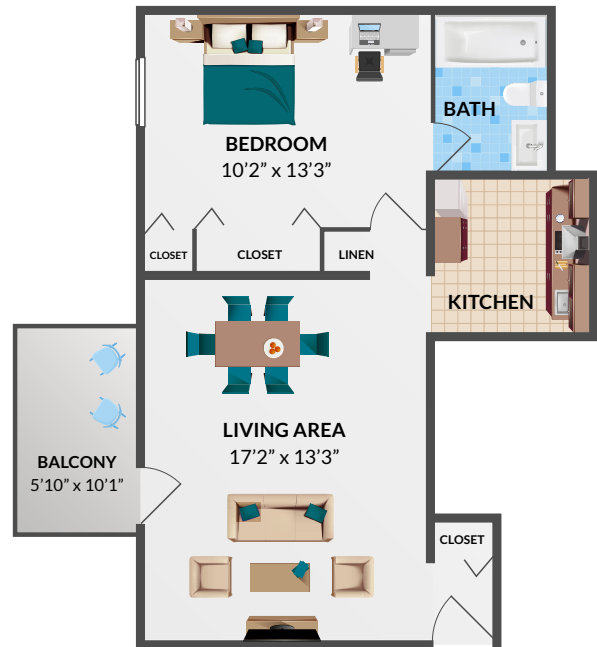
-APARTMENT HOMES-

*Floor plans are artist's conception. Details and dimensions may differ from actual plans. Standard and optional features may vary. Management reserves the right to initiate changes without prior notice. See Community Manager for more information.

A1 1 Bedroom 1 Bath
750 Sq. Ft.*

\$ _____

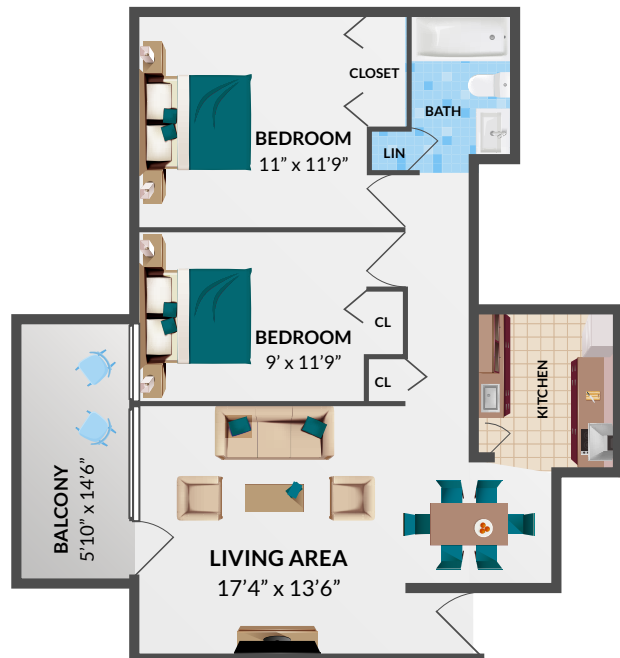
Date Available _____



B1 2 Bedroom 1 Bath
850 Sq. Ft.*

\$ _____

Date Available _____



311 Trimble Rd, Joppatowne, MD 21085
marinerspointe@aionmanagement.com | livemarinerspointe.com

410-679-2104

AION
MANAGEMENT



*Floor plans are artist's conception. Details and dimensions may differ from actual plans. Standard and optional features may vary. Management reserves the right to initiate changes without prior notice. See Community Manager for more information.

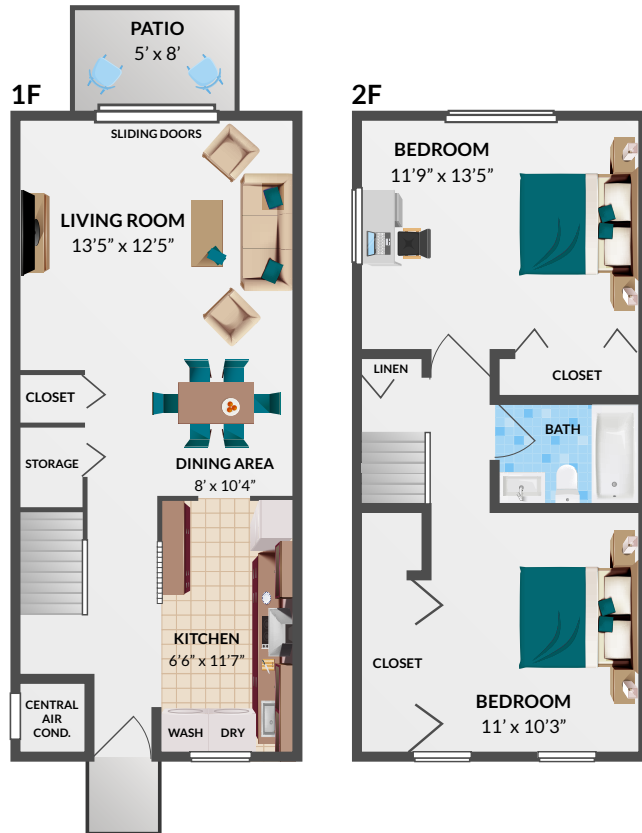
MARINER'S POINTE

-APARTMENT HOMES-

B2 2 Bedroom 1 Bath
Townhome
900 Sq. Ft.*

\$ _____

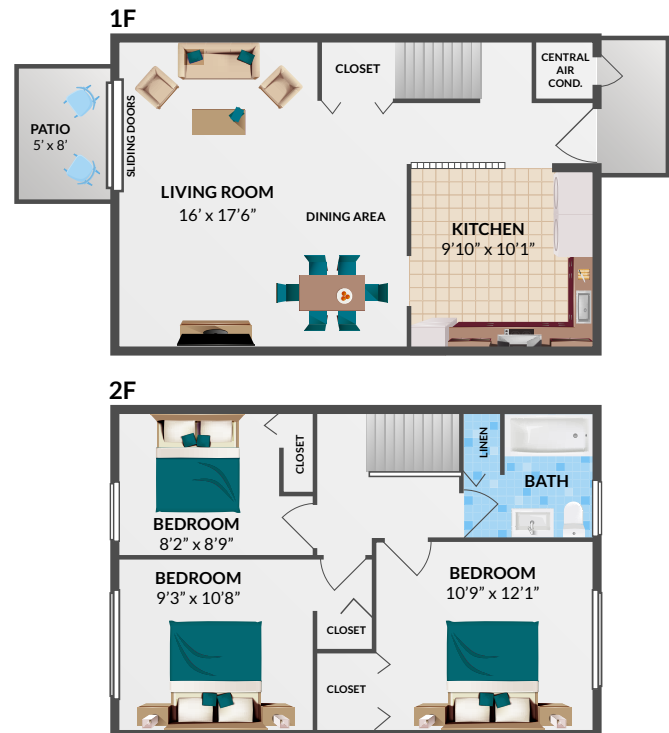
Date Available _____



C1 3 Bedroom 1 Bath
Townhome
1080 Sq. Ft.*

\$ _____

Date Available _____



311 Trimble Rd, Joppatowne, MD 21085
marinerspointe@aionmanagement.com | livemarinerspointe.com

410-679-2104

AION
MANAGEMENT