



*The*  
**BORO**  
APARTMENTS

*TheBoroApartments.com*



# Style & *Space* All In One Place

Welcome to The Boro, a collection of stylish apartments dawning new light in Atlanta's beloved Buckhead neighborhood. Our lush courtyards pair perfectly with your desire to connect with the outdoors, and our expansive floor plans feature refined touches tailored to your fancy. Convenient 24-hour access to our state-of-the-art fitness equipment will keep you fully charged. Have it all in one boutique gem you'll love calling home.





# Find *Your* *Home* Here

Our stylish homes beckon you with newly renovated spaces. From efficient 1-bedroom residences to sprawling 2- and 3-bedroom floor plans, all of our apartments feature a discerning attention to detail.

## THE DETAILS

Newly Renovated

Spacious Floor Plans

Washer & Dryer in  
Every Apartment

Large Garden Tubs

Spacious Closets

High-Speed Fiber  
Internet Enabled

Ceiling Fans

Work-from-Home  
Floor Plan Options

Upgraded Appliance  
Packages Available

# Convenience Is Your *New* *Neighbor*

Thoughtful touches extend far beyond your personal space. Our entire community is designed to provide a blend of practical conveniences and places to leave the daily grind behind. All of this is backed up by a responsive team that's dedicated to providing great service.

## THE AMENITIES

Two Sparkling Pools

Grilling Stations

Community Event Room

Resident Party Room

Package Concierge

Pet Friendly

Close To Shopping & Dining

Easy Access to Parking

Serene Landscaped  
Courtyards

Controlled Building Access

Excellent Buckhead  
Location

Two 24-hour State-of-the-  
Art Fitness Centers





*The*  
BORO  
PHIPPS

*The*  
BORO  
KINGS

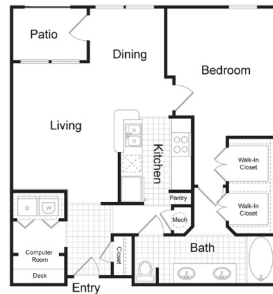
Choose from versatile floor plans  
that can accommodate everyone.

EVERY SHAPE & SIZE



# Featured Plans

# The BORO PHIPPS



A1

1 Bedroom | 1 Bathroom | 902 Sq. Ft.



A2

1 Bedroom | 1 Bathroom | 1,049 Sq. Ft.



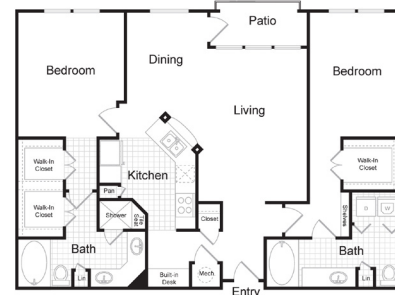
A4

1 Bedroom | 1 Bathroom | 964 Sq. Ft.



A5

1 Bedroom | 1 Bathroom | 1,046 Sq. Ft.



B1

2 Bedroom | 2 Bathroom | 1,293 Sq. Ft.



B2

2 Bedroom | 2 Bathroom | 1,296 Sq. Ft.

Floor plans are artist's rendering. All dimensions are approximate. Actual product and specifications may vary in dimension or detail. Not all features are available in every rental home. Prices and availability are subject to change. Rent is based on monthly frequency. Additional fees may apply, such as but not limited to package delivery, trash, water, amenities, etc. Deposits vary. Please see a representative for details.



# Featured Plans

# The BORO PHIPPS

**B3** | 2 Bedroom | 2 Bathroom | 1,417 Sq. Ft.

**B4** | 2 Bedroom | 2 Bathroom | 1,536 Sq. Ft.

**B5** | 2 Bedroom | 2 Bathroom | 1,499 Sq. Ft.

**B6** | 2 Bedroom | 2 Bathroom | 1,774 Sq. Ft.

**C1** | 3 Bedroom | 2 Bathroom | 1,580 Sq. Ft.

**C2** | 3 Bedroom | 2 Bathroom | 1,588 Sq. Ft.

Floor plans are artist's rendering. All dimensions are approximate. Actual product and specifications may vary in dimension or detail. Not all features are available in every rental home. Prices and availability are subject to change. Rent is based on monthly frequency. Additional fees may apply, such as but not limited to package delivery, trash, water, amenities, etc. Deposits vary. Please see a representative for details.



# The BORO KINGS

## Featured Plans

**A1** | 1 Bedroom | 1 Bathroom | 811-850 Sq. Ft.

**A2** | 1 Bedroom | 1 Bathroom | 746 Sq. Ft.

**A3** | 1 Bedroom | 1 Bathroom | 931 Sq. Ft.

**A4** | 1 Bedroom | 1 Bathroom | 924 Sq. Ft.

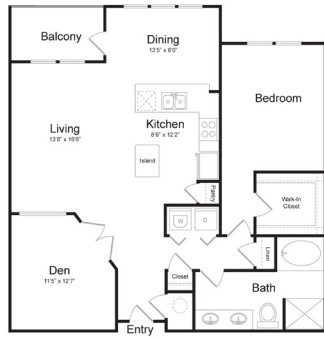
**A5** | 1 Bedroom | 1 Bathroom | 1,095-1,170 Sq. Ft.

Floor plans are artist's rendering. All dimensions are approximate. Actual product and specifications may vary in dimension or detail. Not all features are available in every rental home. Prices and availability are subject to change. Rent is based on monthly frequency. Additional fees may apply, such as but not limited to package delivery, trash, water, amenities, etc. Deposits vary. Please see a representative for details.



# The BORO KINGS

## Featured Plans



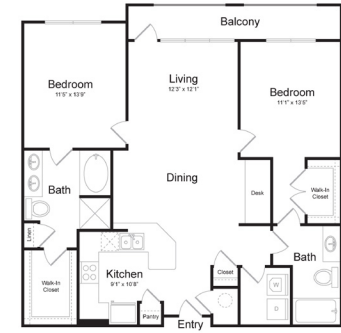
B1

1 Bedroom | 1 Bathroom | Den | 1,146 Sq. Ft.



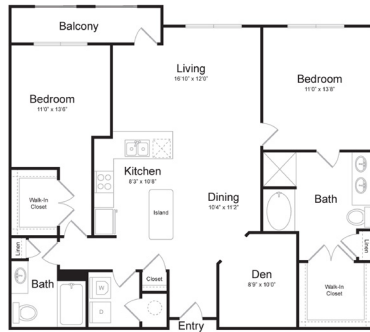
B2

1 Bedroom | 2 Bathroom | Den | 1,317 Sq. Ft.



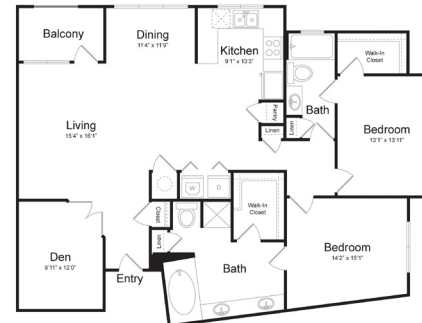
C

2 Bedroom | 2 Bathroom | 1,171 Sq. Ft.



D1

2 Bedroom | 2 Bathroom | Den | 1,321 Sq. Ft.



D2

2 Bedroom | 2 Bathroom | Den | 1,501-1,722 Sq. Ft.

Floor plans are artist's rendering. All dimensions are approximate. Actual product and specifications may vary in dimension or detail. Not all features are available in every rental home. Prices and availability are subject to change. Rent is based on monthly frequency. Additional fees may apply, such as but not limited to package delivery, trash, water, amenities, etc. Deposits vary. Please see a representative for details.



# A Block From *All The Fun*

You're invited to live at the core of all the excitement by Phipps Plaza, MARTA, and Lenox Mall, and a stone's throw from the daily essentials. Where errands, dinner, and a show are right down the block. Experience everything the city entails without sacrificing the space you need to stay cozy and calm.



*The*  
**BORO**  
APARTMENTS

# Lease *Today*

Connect with our leasing team to  
find your next home today.

404.816.9191

*TheBoroApartments.com*

3460 Kingsboro Road NE  
Atlanta, GA 30326

**GREYSTAR**<sup>™</sup>



Rendering is an artist's illustration. All dimensions are approximate.  
Actual product and specifications may vary in dimension or detail.

