



Your New Home Steps Away From Campus

Located directly across the street from the University of Wisconsin-Whitewater on 234 N Prince St Whitewater, WI, The Element Student Housing couldn't be closer to campus without being on it!



APARTMENT FEATURES

- Individual Bedrooms with Keyed Entry
- Fully Furnished Apartments with In-Unit Laundry
- Intercom for Extra Security
- High-Speed Internet

COMMUNITY FEATURES

- On-Site Management
- Study Lounge
- On-Site Maintenance
- On-Site Parking Available-\$50/month for our exterior lot and \$87/month for garage parking
- Community Lounge

Connect with Us



www.elementwhitewater.com



element@bmocinc.com



(608) 453-3319

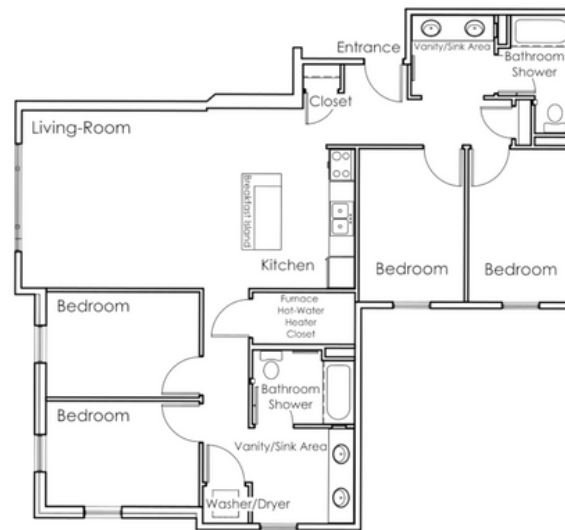
Prime Location for UW-Whitewater Students

elementwhitewater.com

The Perfect Place for Students

We offer spacious 3 and 4-bedroom apartments with individual leases. Share an apartment with friends or take advantage of our roommate matching process, so you can have the best college experience!

Built in 2012, our apartments offer students the latest in modern, off-campus living. Included are in-unit washer and dryers, all major kitchen appliances, security systems, central heating and cooling, and more!



4BR/2BA-Deluxe



4BR/2BA-Standard

Our Floor Plans & Pricing

September Pricing Special

→ 4-Bedroom Layouts

4BR/2BA-STANDARD FLOOR PLAN

- 1,280 sq ft | One Room in 4BR/2BA
1 BED (Monthly): \$647.00
Estimated price with parking: \$697.00

4BR/2BA-DELUXE FLOOR PLAN

- 1,300 sq ft | One Room in 4BR/2BA
1 BED (Monthly): \$697.00
Estimated price with parking: \$747.00

→ 3-Bedroom Layouts

3BR/2BA-STANDARD FLOOR PLAN

- 1,200 sq ft | One Room in 3BR/2BA
1 BED (Monthly): \$797.00
Estimated price with parking: \$847.00

All residents are required to have a liability renter's insurance policy with at least \$100,000 in coverage.

Your rent includes **high-speed internet, water, sewer, and trash removal**. Residents are responsible for gas and electricity by setting up an account with WE Energies.

ELEMENTWHITEWATER.COM