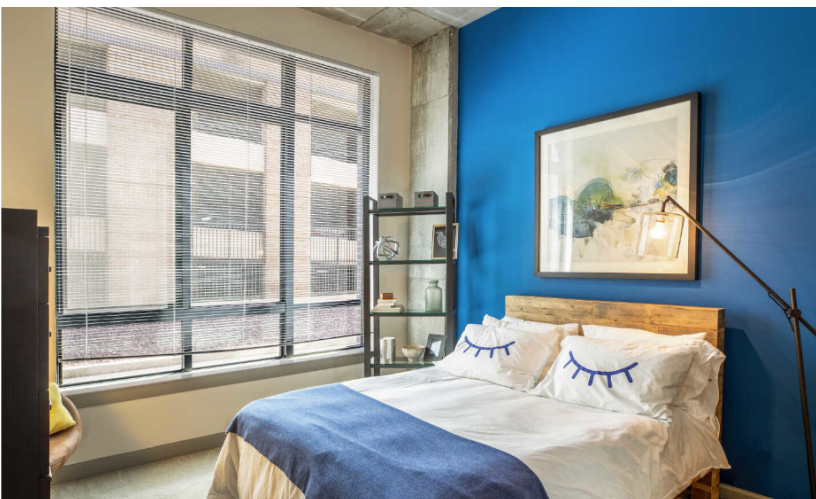




Life is Better Here

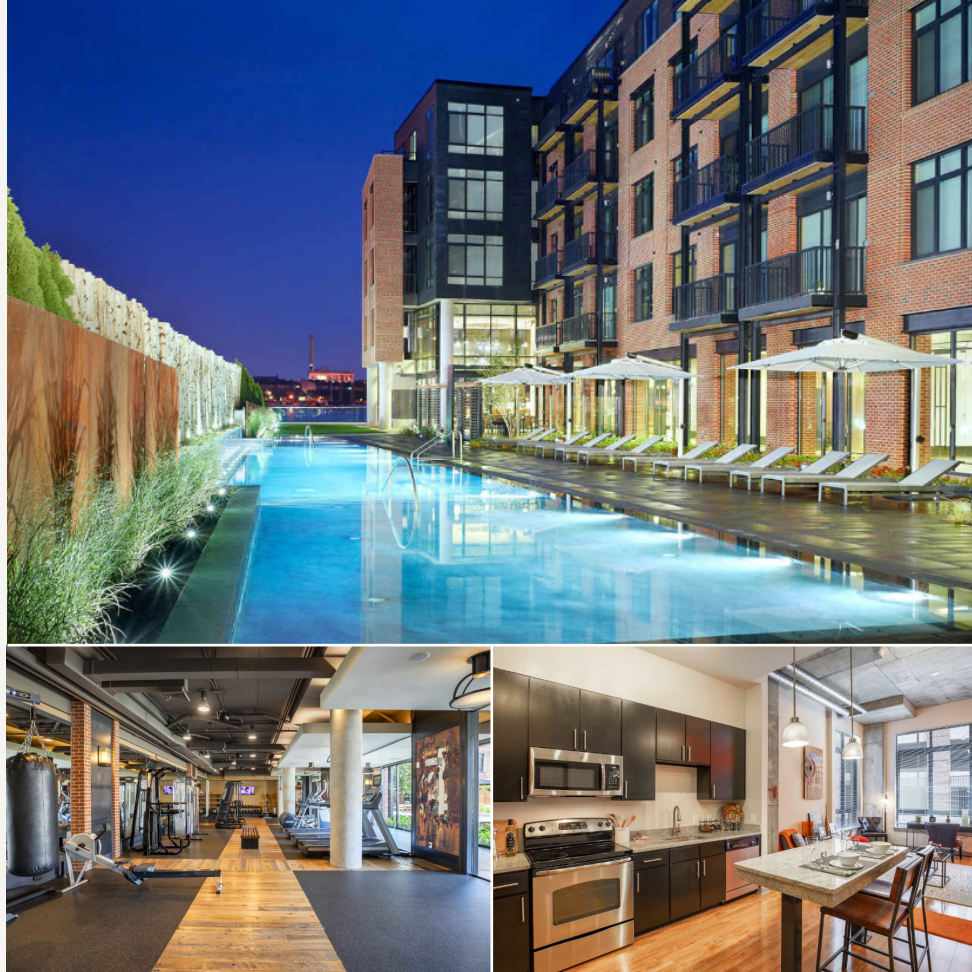
Arrive Union Wharf provides inspiration and innovation to your everyday life throughout our luxurious green living spaces. Our studio, 1, and 2-bedroom luxury apartments are designed to blur the lines between inside and out. Materials and spaces merge effortlessly in each home, designed architecturally to make a statement as you indulge in your retreat. Arrive Union Wharf is perfectly situated on the gorgeous Fell's Point waterfront, allowing you a serene sanctuary just moments from everything you need.

- Zero-Edge Infinity Pool with Water Cascading down over Granite Stones
- Resort-Style 12,000-sq.-ft. Clubhouse That Includes: Fitness Center, Screening Room, Conference Room, Bar Area, with Billiards Room and eLounge
- Club Room Featuring Visually Striking, Completely Transparent Nano Wall and Dual-Sided Glass, Interior/Exterior Fireplace, and Wrap-Around Deck with Water Views
- Conference Room
- Bar Area with Billiard Room
- eLounge
- Smoke-Free Community
- Property Lined by Birch Trees to Maximize Privacy
- Screening Room
- Pet Friendly
- Advanced, Interactive & iPod-Ready Equipment by Precor
- Treadmills & Elliptical Machines Overlooking Pool Garden
- Interactive X Bikes
- Free Weights & Olympic Bench
- TRX and Kick Boxing Stations
- Yoga/Pilates Studio
- Three Private Courtyards, One with Massive Outdoor Fireplace & Propane Grill
- Private Parking Garage with Bike Racks & Electric Car Charging Stations
- Chilango's Tequila Bar & Grill Located On-Site



A Vibrant Community

A green mindset runs through every facet of life at Arrive Union Wharf, without sacrificing unexpected luxuries. From the Kashmir white granite countertops complementing the GE ENERGY STAR® appliances, to the locally sourced, energy-efficient building materials, Arrive Union Wharf truly embodies a union between luxury and eco-consciousness.



Luxury Mid-Rise with Lavish Interiors

- Spectacular Water & City Views*
- Open, Spacious, Roommate-Style Floor Plans with Two Master Bedrooms
- Expansive Terraces and Balconies*
- Modern Finishes Throughout, Including Designer, Brushed Nickel Fixtures & Contemporary Industrial Pendant Lighting
- Green Label+ Neutral Carpet in Living Areas & Bedrooms
- Large Windows & Open Airy Floor Plans
- 9' Ceilings Throughout, with 12' Exposed Concrete Ceilings on Level One
- Full-Sized ENERGY STAR® Washers & Dryers in Each Home
- Hardwood Flooring on 1st & 2nd Floors
- Tile Foyers
- Reverse Two-Tone Trim
- Walk-In Closets with Ventilated Wire Shelving
- Kashmir White Granite Countertops
- Upgraded Stainless Sink & Cabinet Hardware
- GE ENERGY STAR® Stainless Steel Appliances
- Espresso-Finish Flat-Front Cabinetry
- Bar Seating Area & Kitchen Islands
- Custom Light Fixtures
- Oversized Shower Heads
- Oversized Soaking Tubs Available
- Linen-Texture, Soft Grey Tile Floors in Kitchens and Bathrooms*
- Espresso Wood Vanity with Stainless Steel Hardware in Bathrooms
- Subway Tile Surrounds in White
- Arched Shower Rods for Maximum Shower Space

**Only available in select homes*



A Proud Community of
Trinity Property Consultants



DON'T JUST COME HOME, ARRIVE.®

915 S Wolfe Street, Baltimore, MD 21231
Call Us 410-315-1981
ArriveUnionWharf.com

